



Protecting and Promoting Health: Infants and Children

Jennita Reefhuis, PhD
Centers for Disease Control and Prevention

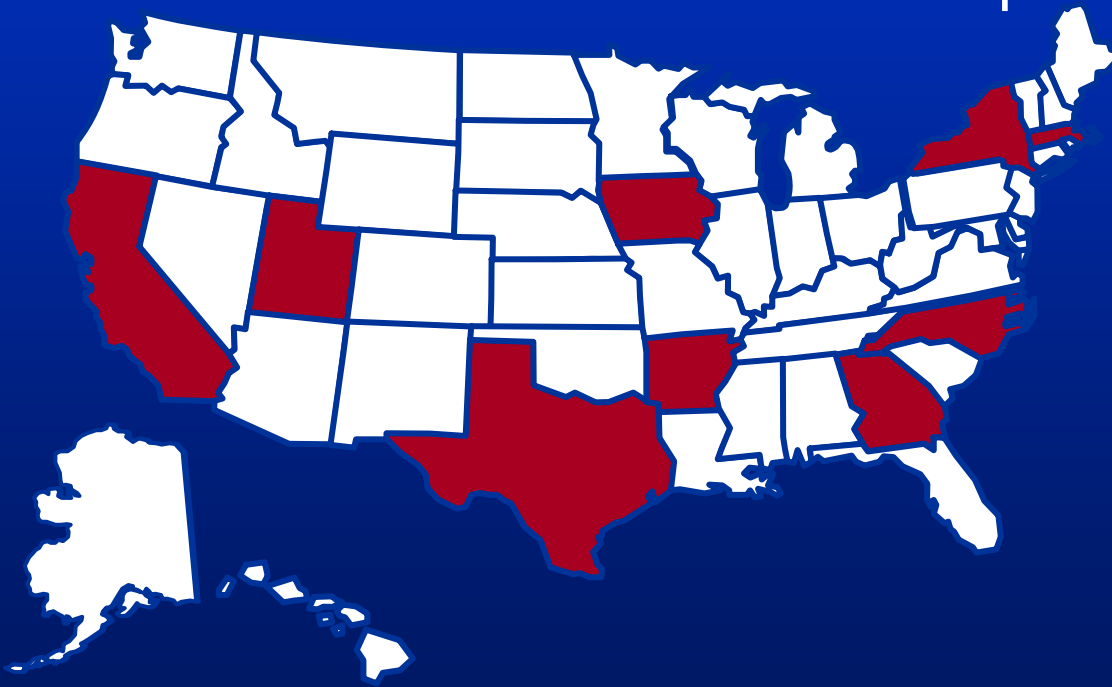
National Center on Birth Defects
and Developmental Disabilities



SAFER • HEALTHIER • PEOPLE™

National Birth Defects Prevention Study

- Multi-site, population-based study of major structural birth defects
- Exposures during pregnancy
- Genetic factors that interact with exposures



SAFER • HEALTHIER • PEOPLE™

Risk factors for birth defects

- Obesity
- Antidepressants
- Infertility treatments
 - IVF, ICSI
 - Ovulation stimulating drugs
- Genes



National Center on Birth Defects and Developmental Disabilities

- Birth defects
- Autism
- Learning disabilities
- Child development
- Early hearing detection and intervention

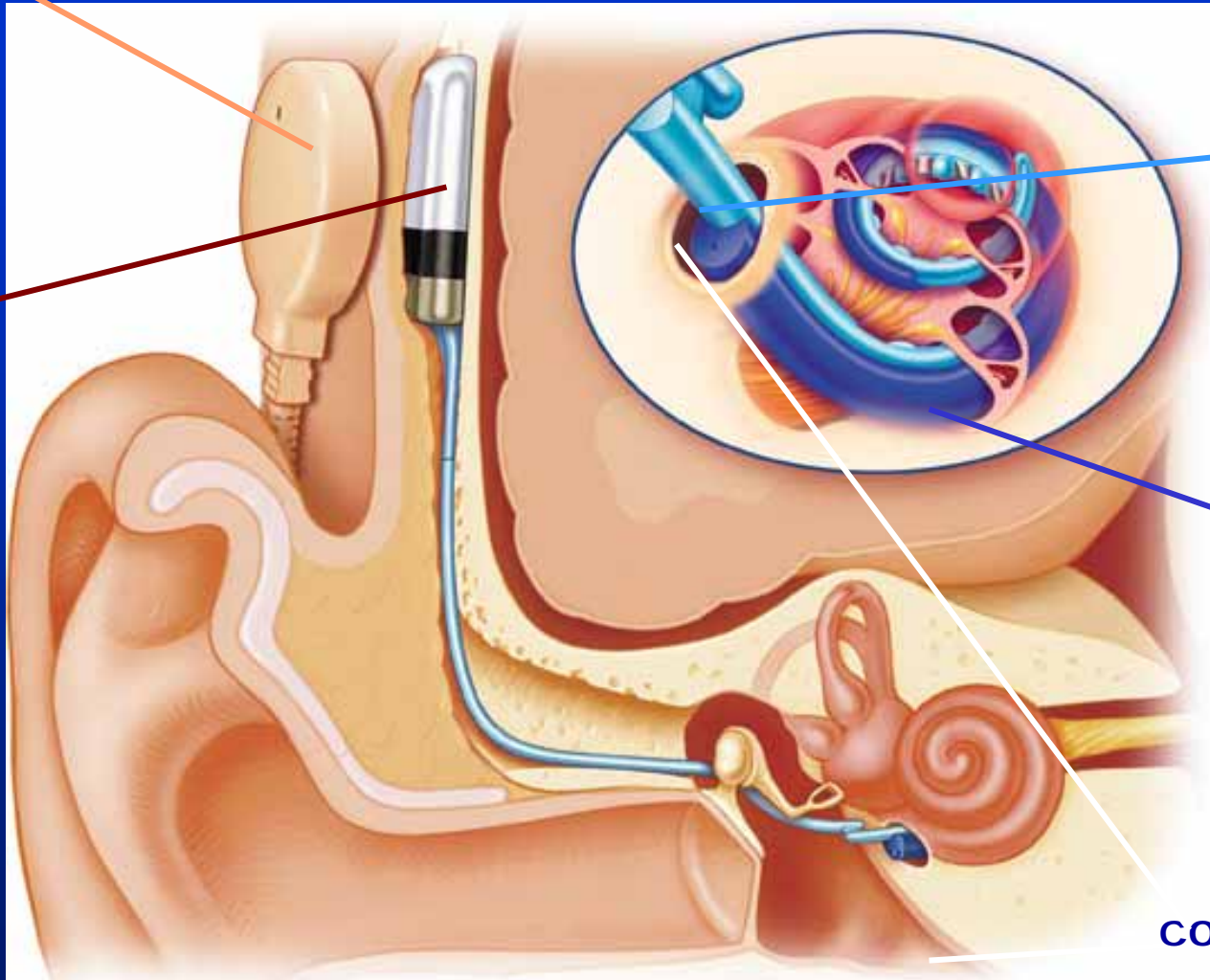


SAFER • HEALTHIER • PEOPLE™

Transmitting coil

Cochlear implants

receiver



Electrode array

positioner

cochleostomy

Source: <http://www.nvvs.nl/ci/miniserie1.htm>



SAFER • HEALTHIER • PEOPLE™

Cochlear implants and bacterial meningitis - need for vaccination

- Collaboration across CDC and with FDA and states
- Interviewed parents, reviewed medical records
- Within 4 months changed vaccination recommendation ACIP
- Association between cochlear implants and bacterial meningitis
- Risk stayed elevated after 2 years
- In 2007 2 deaths of children (7 and 9 years) who were not completely vaccinated



Thank you!



SAFER • HEALTHIER • PEOPLE™