



# National Center for Chronic Disease Prevention and Health Promotion

**Janet Collins, Ph.D.**  
Director



Department of Health and Human Services  
Centers for Disease Control and Prevention



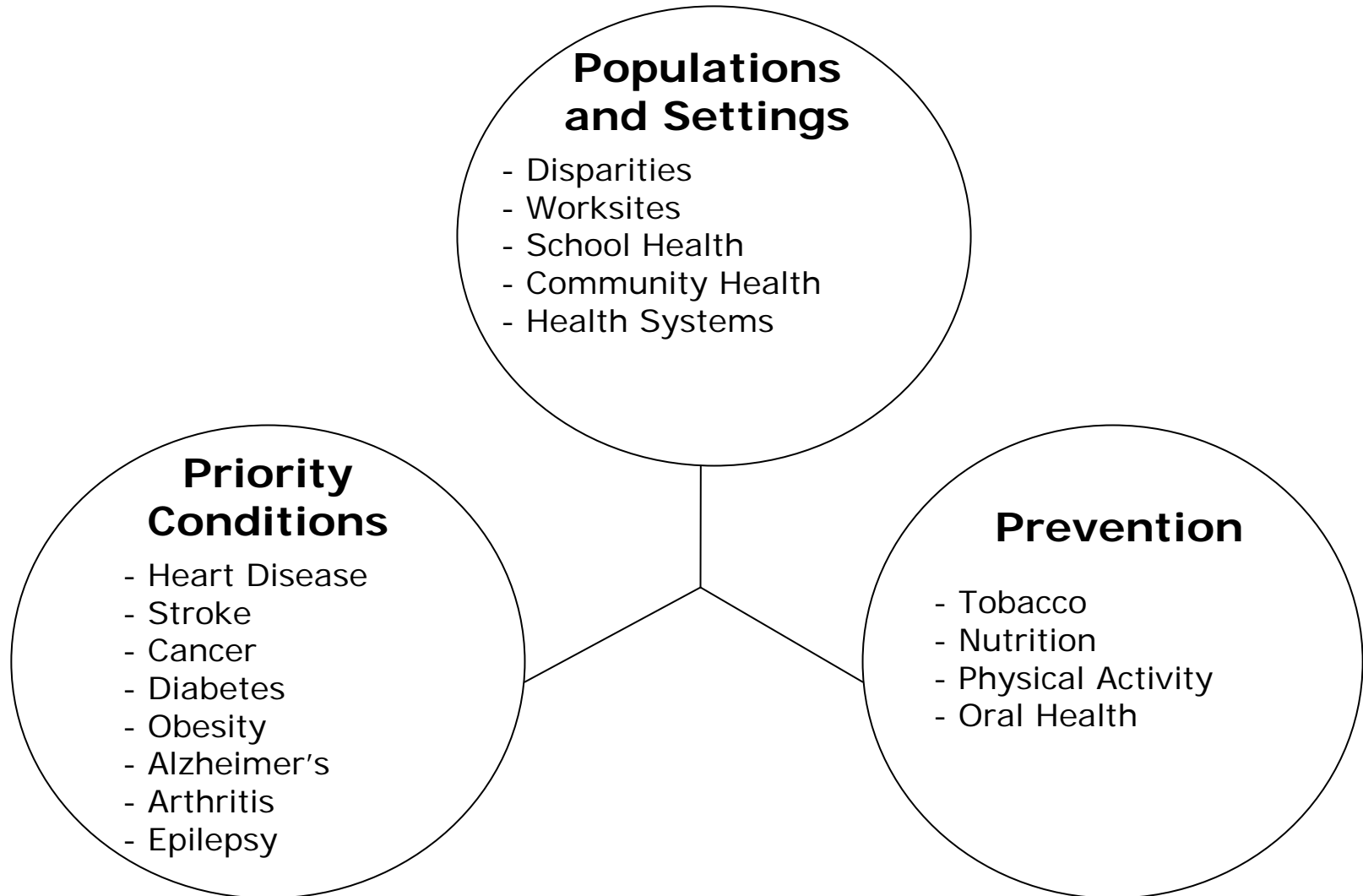
# Chronic Diseases:

- Are responsible for 7 of every 10 U.S. deaths.
- Cause major limitations in daily living for 1 in 10 Americans.
- Account for about 75% of \$2 trillion annual U.S. medical care costs.
- Cause significant racial/ethnic disparities in health.

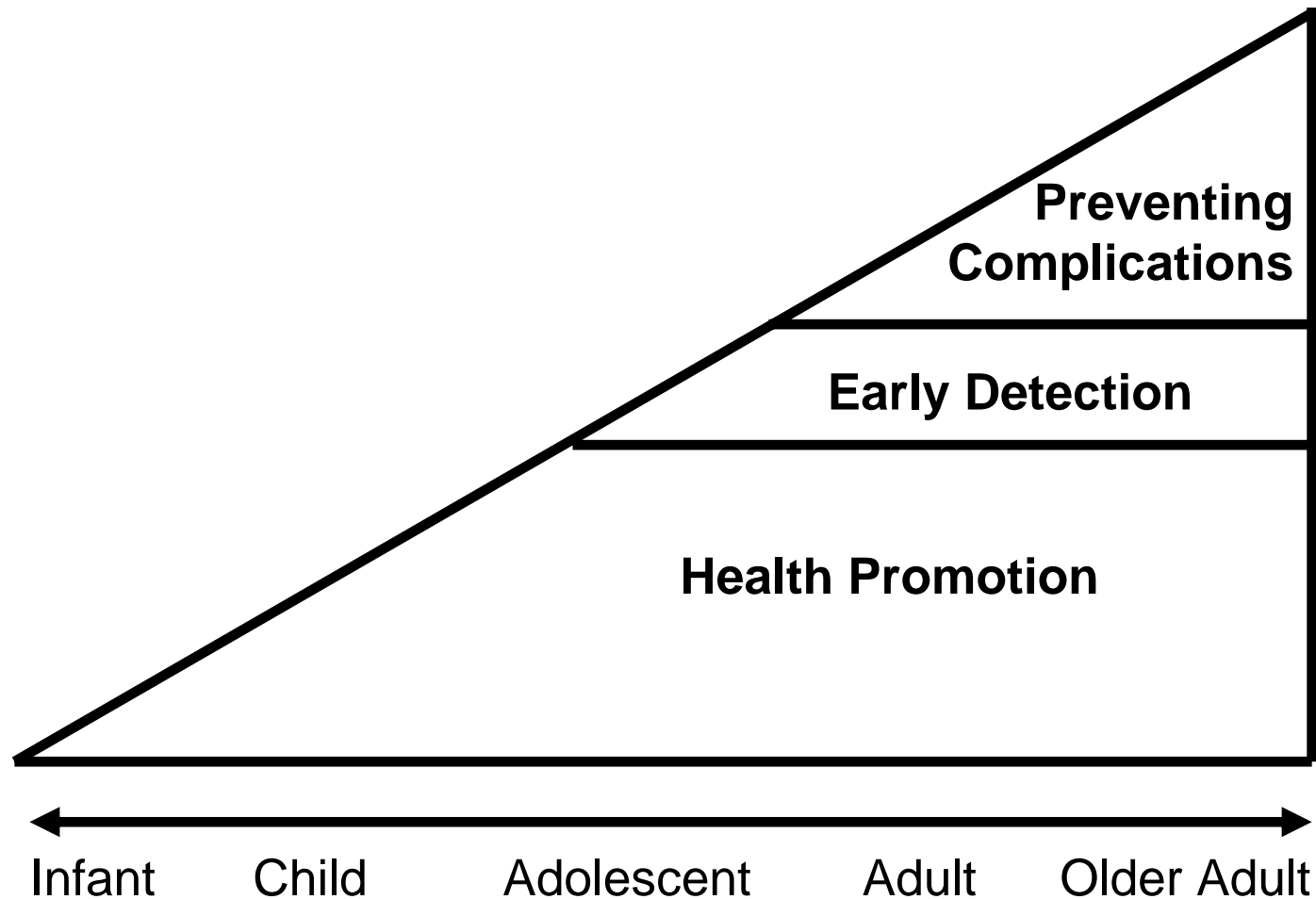
*Source: National Center for Health Statistics. Health, United States, 2006*



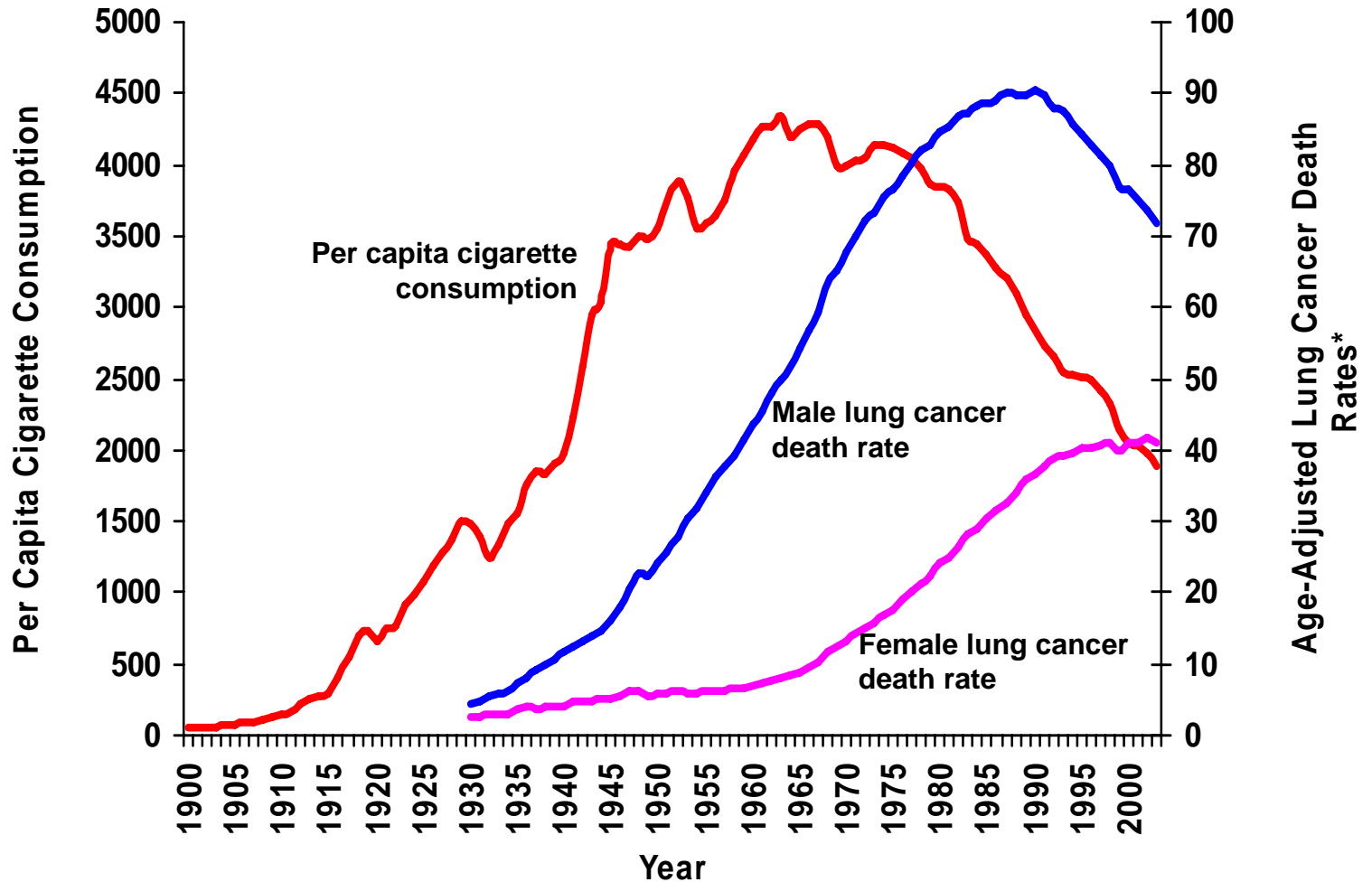
# National Center for Chronic Disease Prevention and Health Promotion



# Our Public Health Strategy



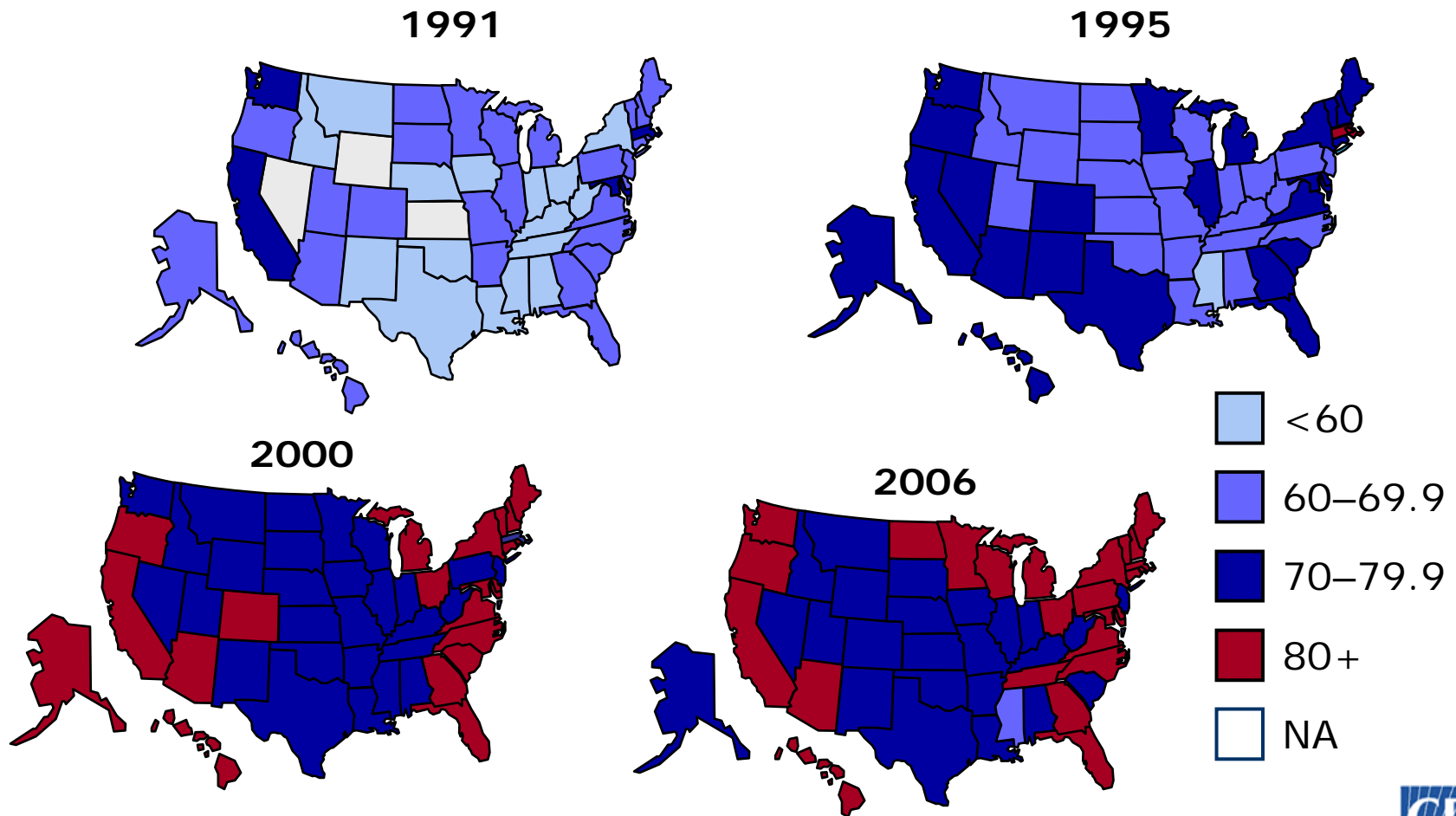
# U.S. Smoking and Lung Cancer Rates



\*Age-adjusted to 2000 US standard population.

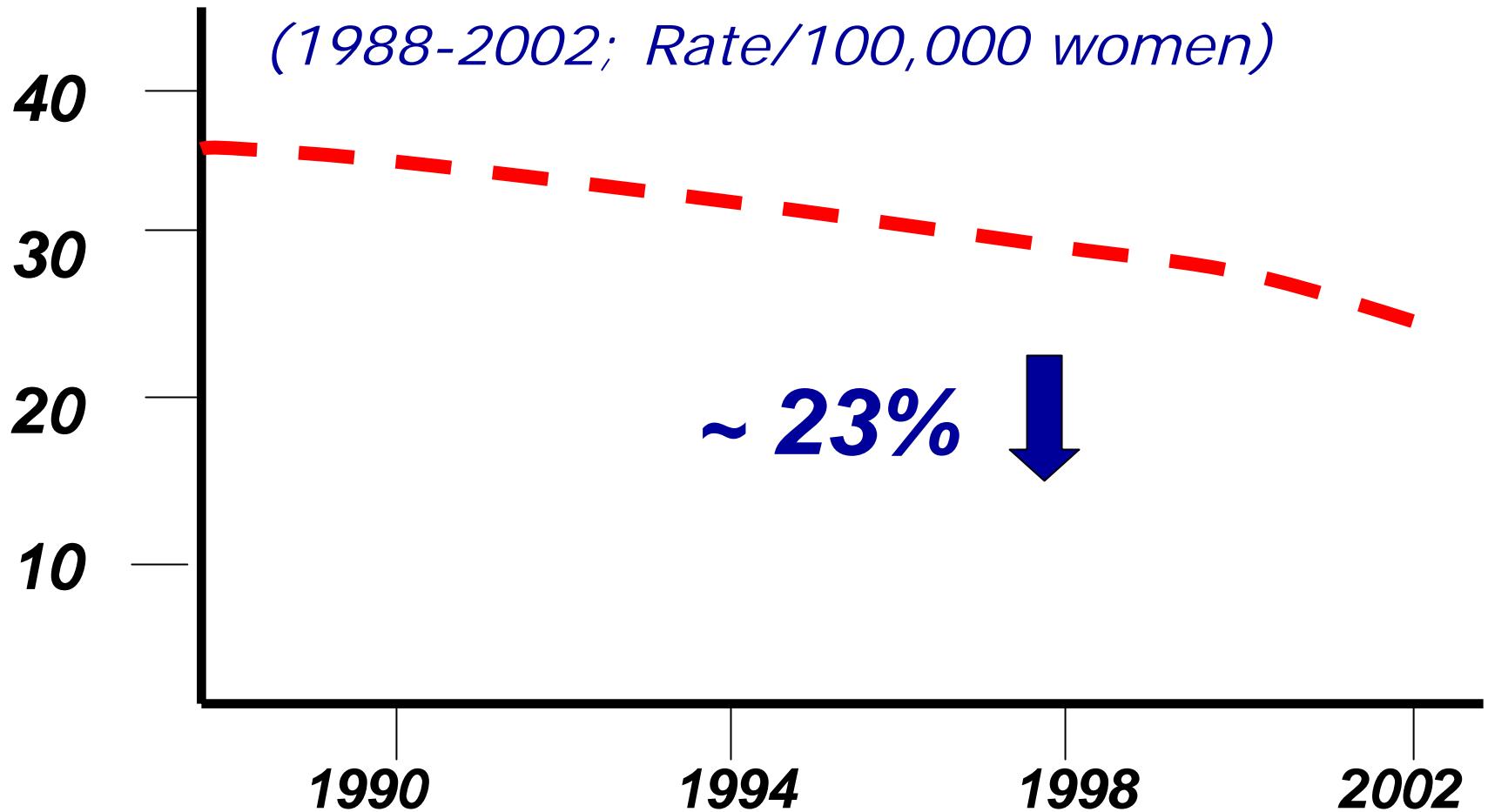
Source: Death rates: US Mortality Public Use Tapes, 1960-2003, US Mortality Volumes, 1930-1959, National Center for Health Statistics, Centers for Disease Control and Prevention, 2005. Cigarette consumption: US Department of Agriculture, 1900-2003.

# Percentage of Women Age 50+ Having Had a Mammogram Within Past 2 Years

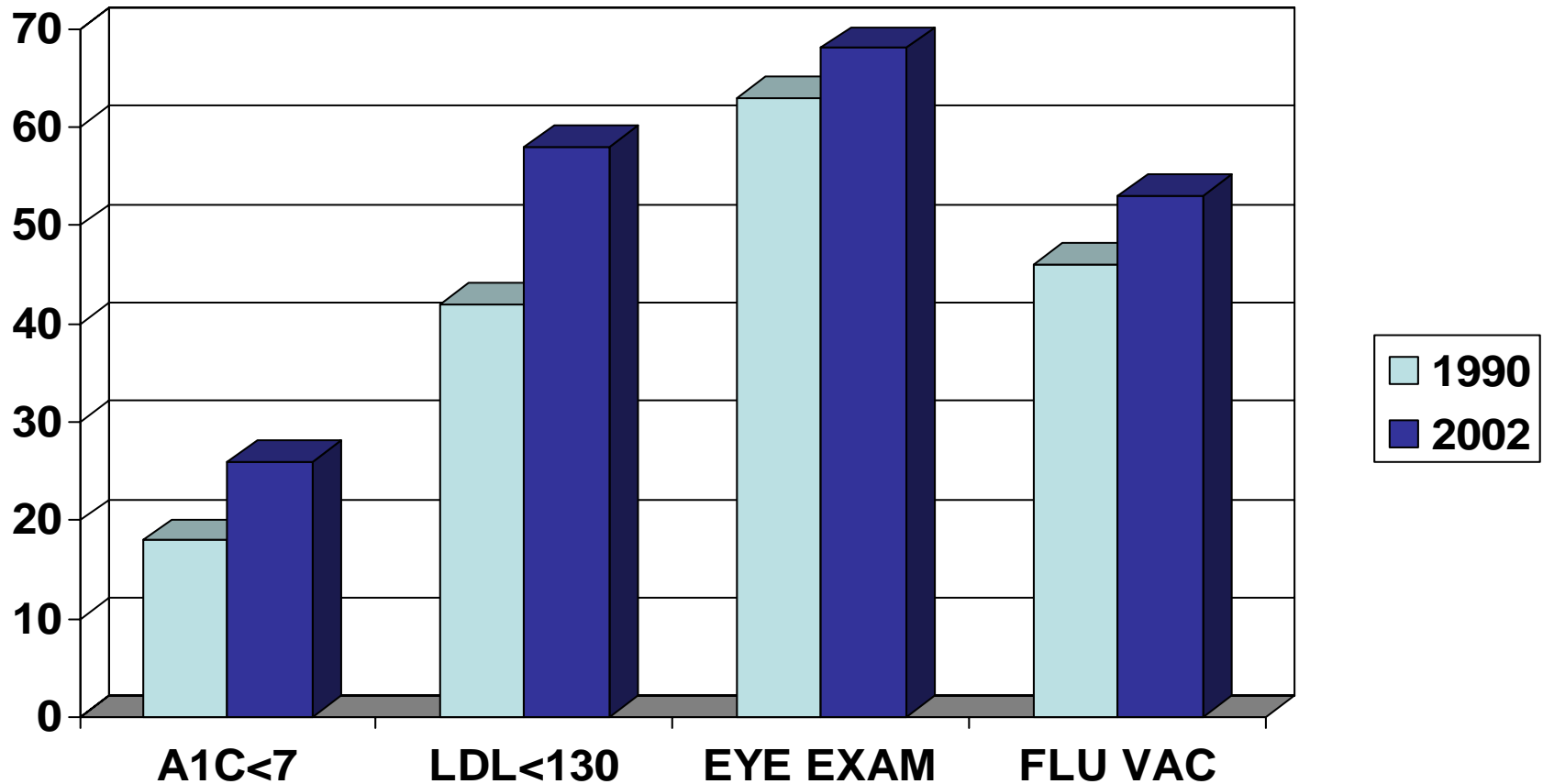


Source: Behavioral Risk Factor Surveillance System

# Progress in Detection: Fall in Breast Cancer Death Rates



# Progress in Control: Diabetes Preventive Care



Source: Saaddine, Ann Intern Med, 2006



# Evidence Base for Diabetes Control

## Preventive Practices

## Outcomes

Eye exams

Lead to

60%

Blindness

Foot exams

Lead to

85%

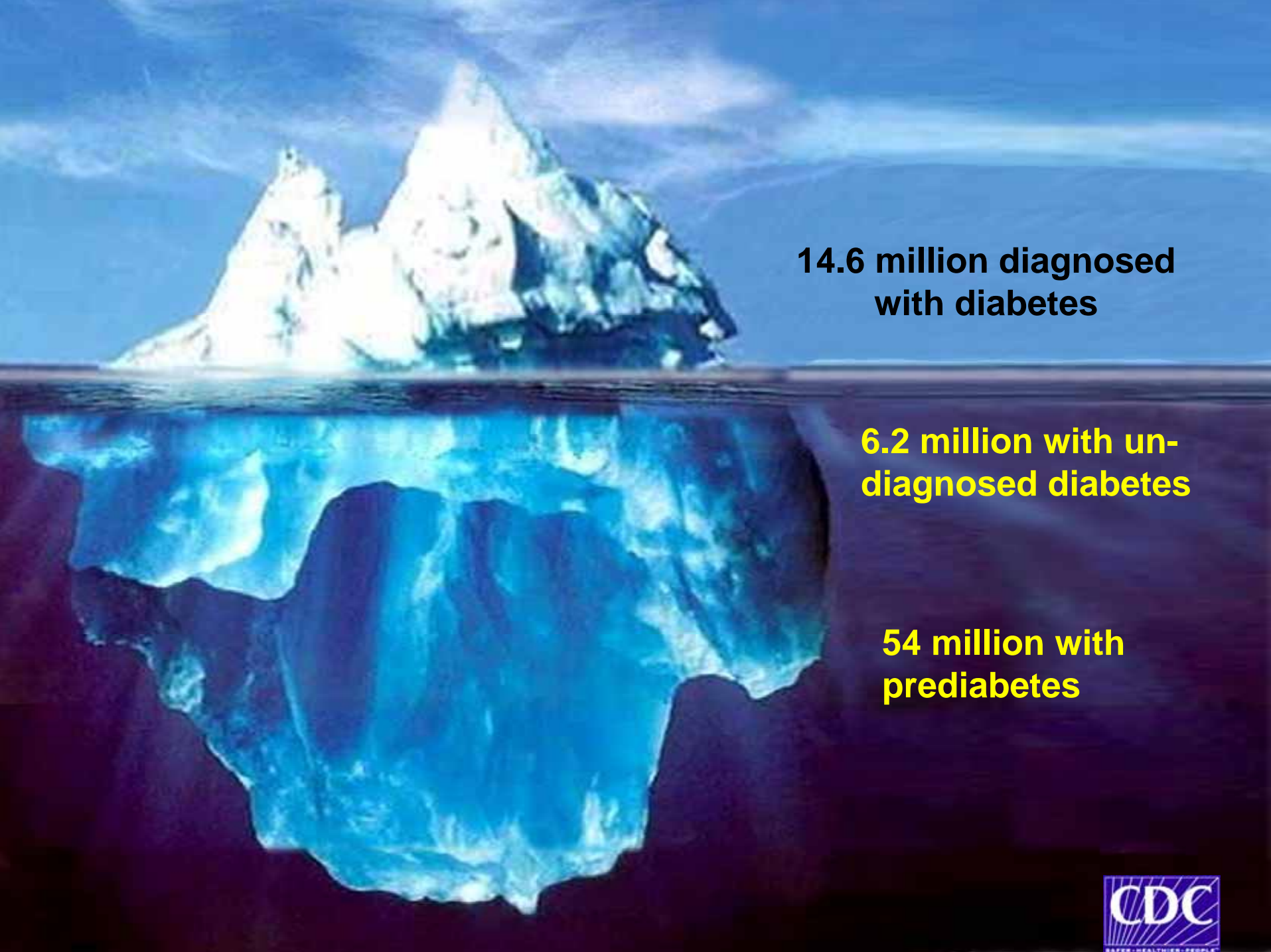
Amputations

Glucose Control

Leads to

40%

Kidney Failure



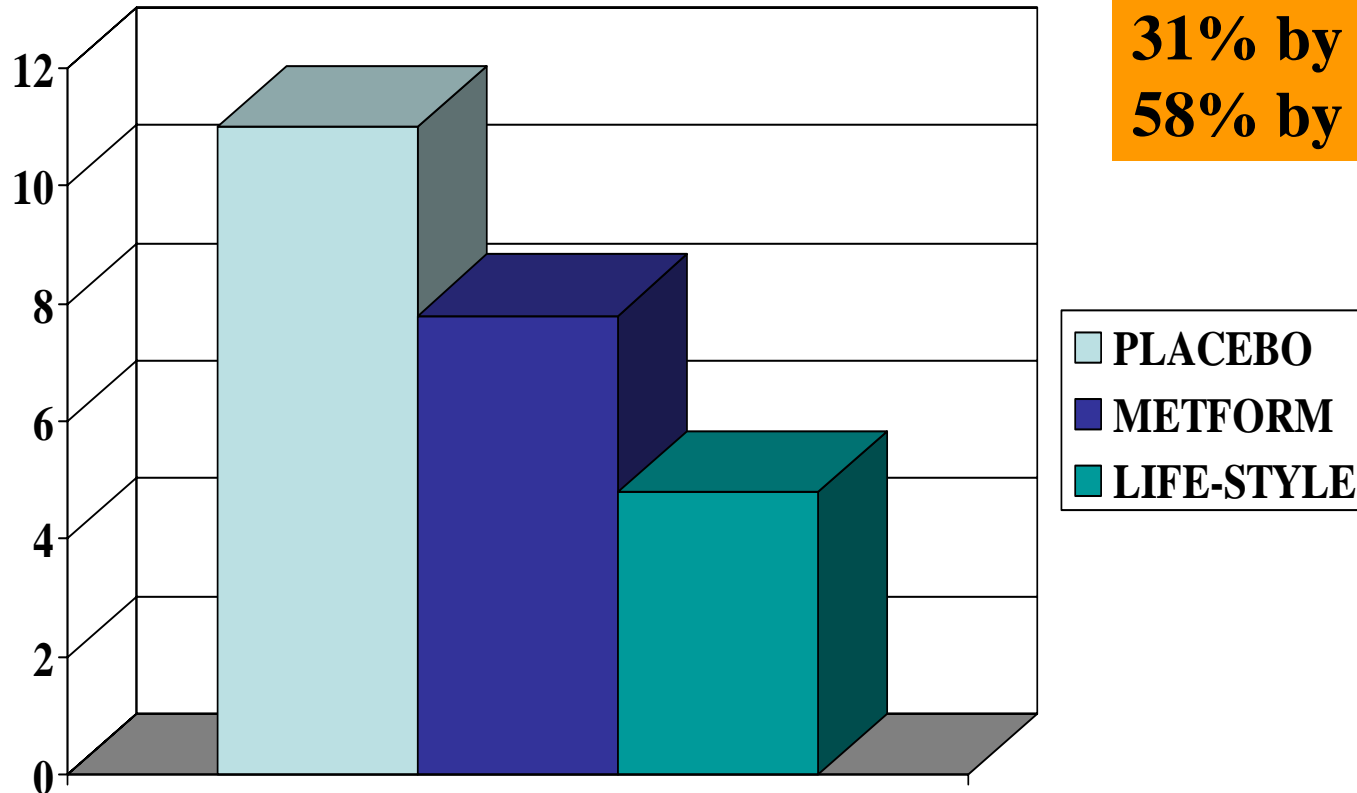
**14.6 million diagnosed  
with diabetes**

**6.2 million with un-  
diagnosed diabetes**

**54 million with  
prediabetes**

# Diabetes Prevention Program

**%  
DM**



**Risk reduction**  
**31% by metformin**  
**58% by lifestyle**

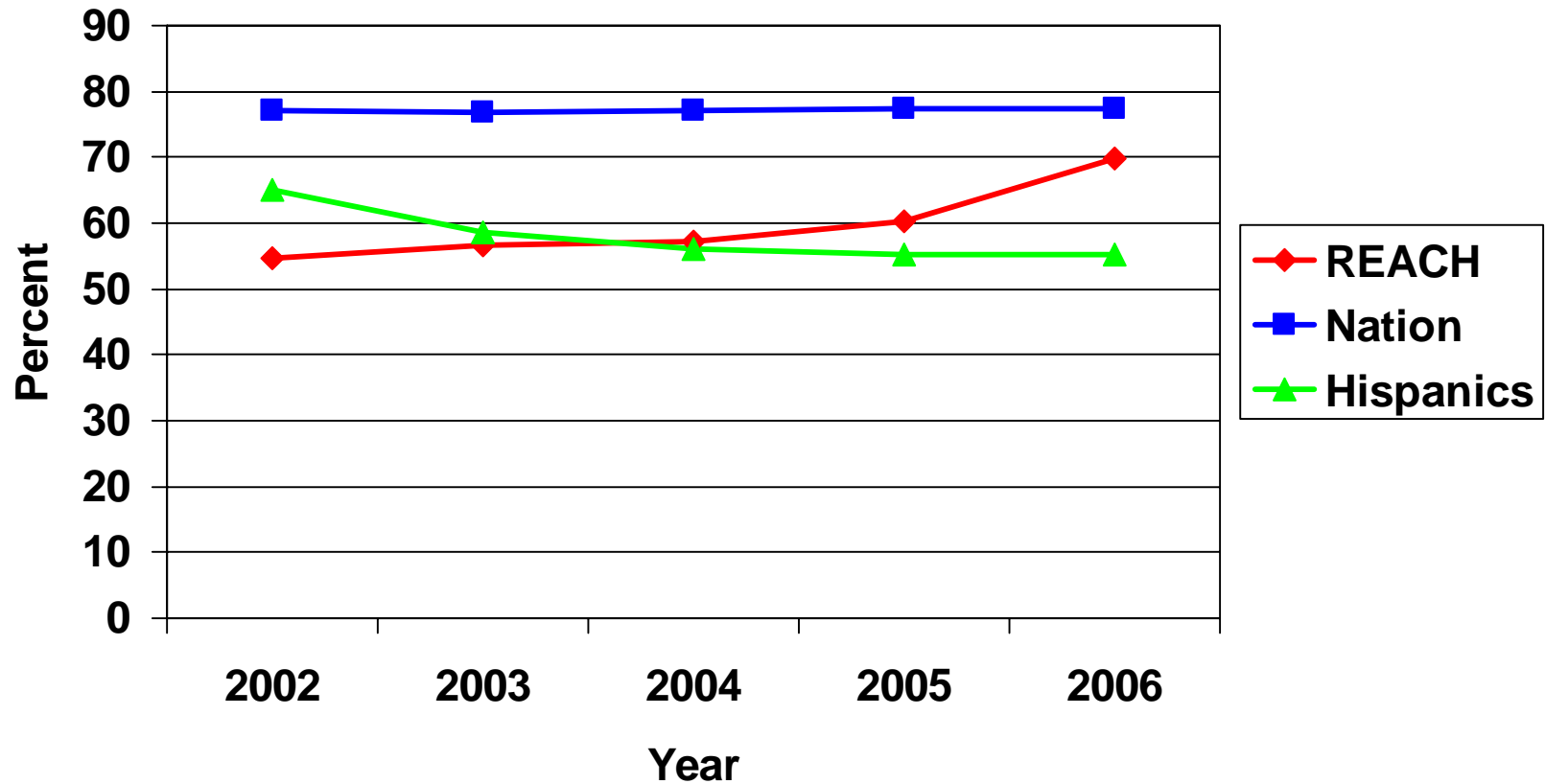
Source: DPP Research Group, NEJM 346:393-403, 2002.



# Community Programs

- Steps The logo for 'Steps to a Healthier US' features a stylized blue figure of a person with arms raised, standing on a set of red and white stairs. Below the stairs, the text 'Steps to a Healthier US' is written in blue and red.
- REACH – Racial and Ethnic Approaches to Community Health The REACH logo consists of five small square images arranged horizontally, each containing a different scene of people. Below each image is a white letter on a purple background: R, E, A, C, H.
- Preventive Health and Health Services Block Grant
- WISEWOMAN

# Cholesterol Screening Among Hispanics REACH Risk Factor Survey, 2002-2006

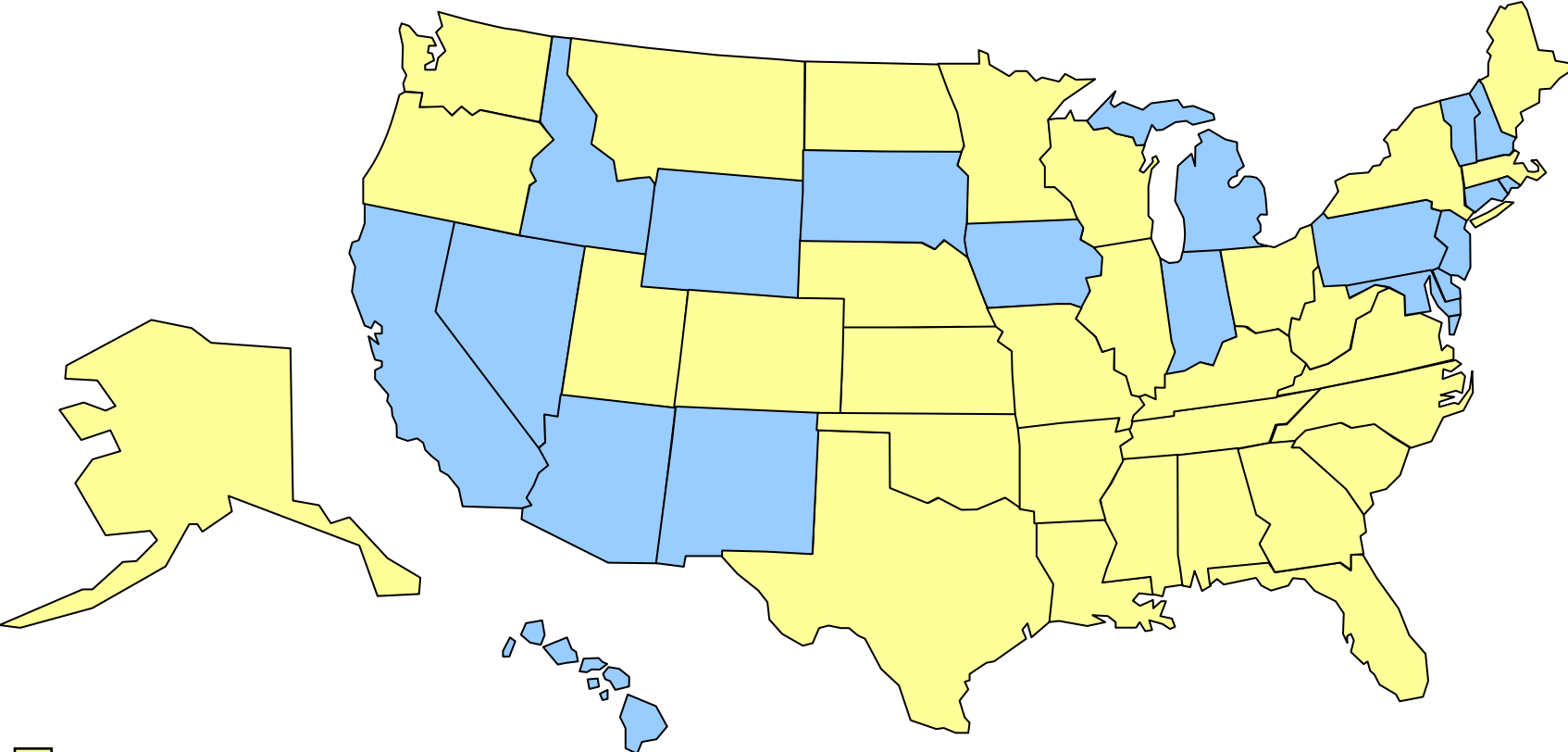


*\*CVD/DM communities only*





# CDC Funded States for Heart Disease & Stroke Prevention, 2006



 Funded States



# **National Center for Chronic Disease Prevention and Health Promotion**