



Healthy Places

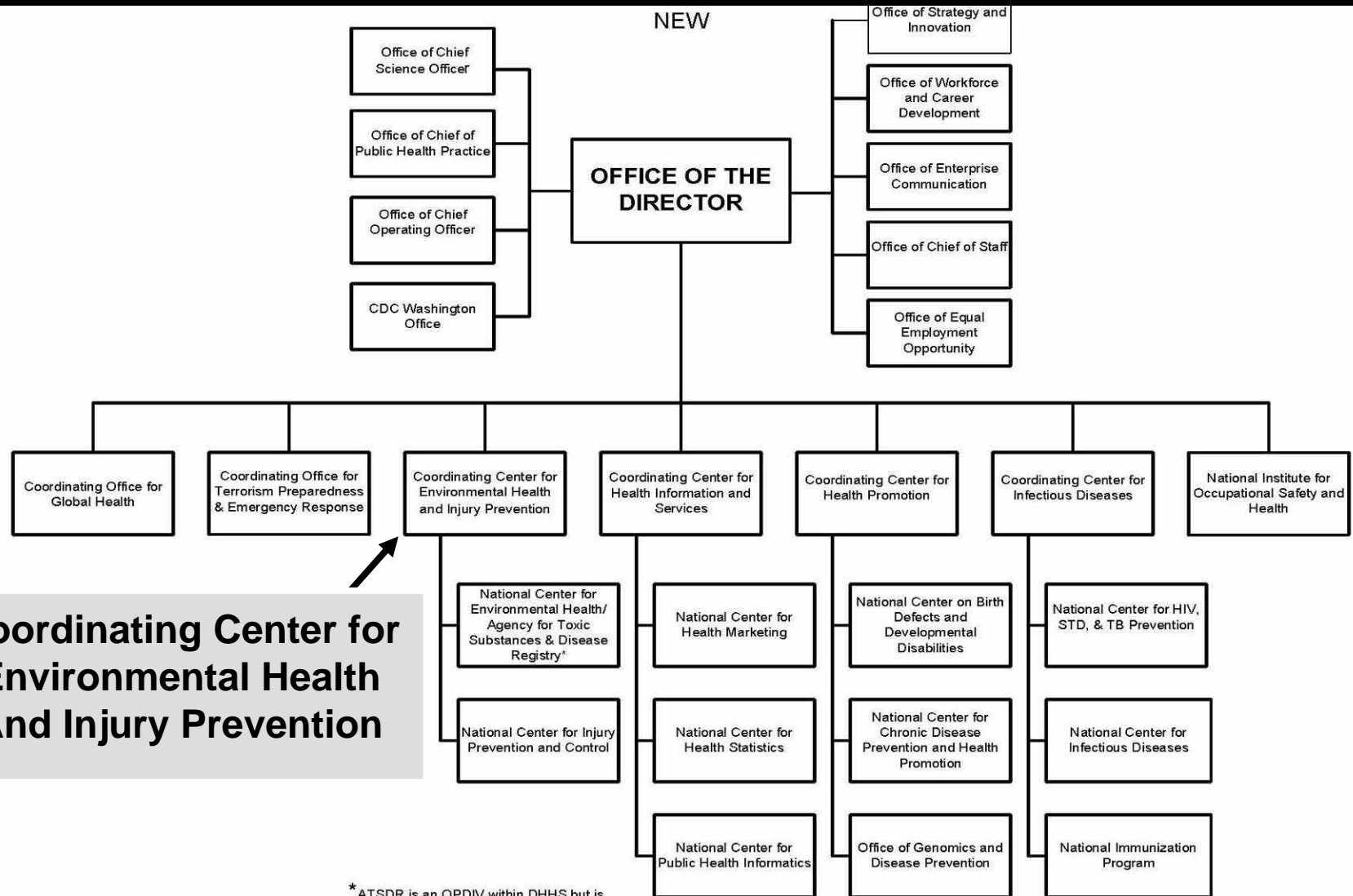


Henry Falk, MD, MPH

*Director, Coordinating Center
for Environmental Health and
Injury Prevention*

SAFER • HEALTHIER • PEOPLE™

CDC Organizational Structure

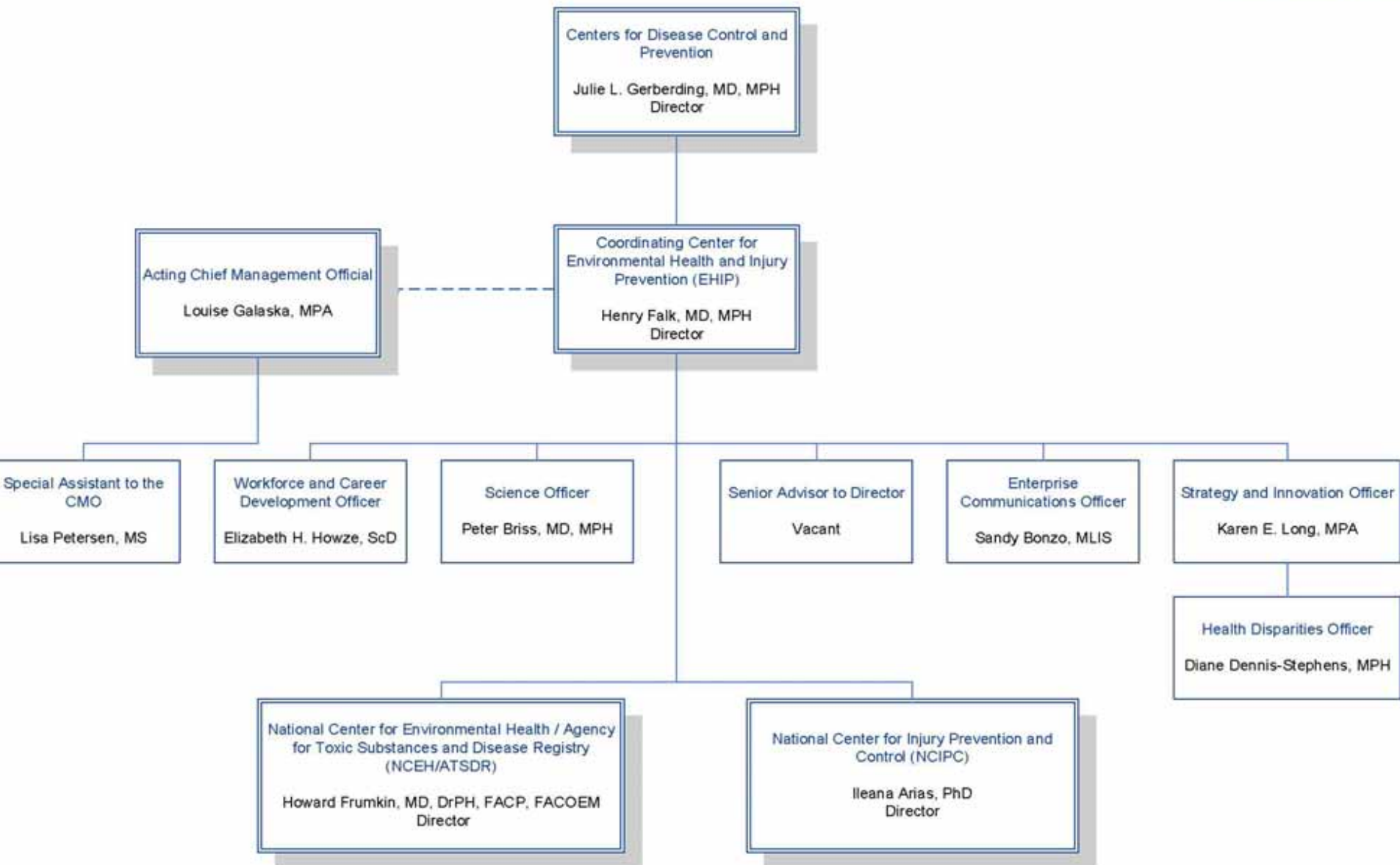


Coordinating Center for Environmental Health And Injury Prevention

* ATSDR is an OPDIV within DHHS but is managed by a common Ofc of the Director with NCEH



Coordinating Center for Environmental Health and Injury Prevention (CCEHIP)





What are the Goals?



**Healthy People
During Every Stage
of Life**

**Infants &
Toddlers
Children
Adolescents
Adults
Older Adults &
Seniors**

**Healthy People in
Healthy Places**

**Workplaces
Communities
Homes
Travel,
Transportation
& Recreation
Healthcare
Settings
Schools
Institutions**

**People Prepared
for Emerging
Health Threats**

**Influenza
Anthrax
Plague
Emerging Infections
Toxic Chemical
Exposure
Radiation Exposure**

**Healthy People in a
Healthy World**

**Health Promotion
Health Protection
Health Diplomacy**

Goal Action Plans

SAFER • HEALTHIER • PEOPLE™



Goals Process

- **Health Impact Planning**
 - ◆ Family of efforts by which CDC links resources and strategies to goals and assesses the impact of its work

- **Goal Action Plans**
 - ◆ Strategic plans that link, leverage, and coordinate CDC's activities across the agency to increase effectiveness and impact.

 - ◆ Build on and complement the strategic plans developed by CDC's operational units



The Importance of Place



- Potential impact throughout all life stages.
- Public health achievements in the 20th Century associated with places
 - ◆ Food safety
 - ◆ Water / Sanitation
 - ◆ Indoor and outdoor air quality
 - ◆ Vector and infection control
 - ◆ Solid and hazardous waste





Healthy Places - Dimensions



- Unique characteristics of each place.
- Health improvement actions specific to the place.



SAFER • HEALTHIER • PEOPLE™



Healthy Places - Paradigm



■ Traditional



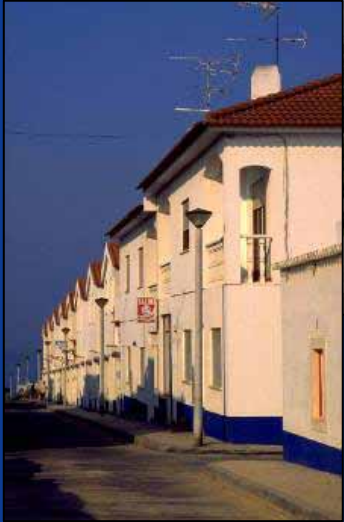
- ◆ Agent (e.g., lead, mercury, & dioxin)
- ◆ Medium (e.g., air, water, soil)
- ◆ Disease (e.g., cancer, COPD)

■ Healthy Places Goals

- ◆ Communities (CCEHIP)
- ◆ Homes (CCEHIP)
- ◆ Institutions (CCID)
- ◆ Workplaces (NIOSH)
- ◆ Schools (CCHP)
- ◆ Healthcare Settings (CCID)
- ◆ Travel, Transportation & Recreation (CCEHIP)



Healthy Homes – Environmental Issues



- Asthma
- Ventilation
- Indoor Air Pollutants
- Environmental Tobacco Smoke

- VOCs
- Household Poisonings
- Injury Hazards
- Home Design
- Water Source
- Septic Tanks
- Attic Insulation
- Home Pesticides
- Radon
- Mold
- Lead-based Paint & Dust
- Dust Mites & Cockroach Allergens

SAFER • HEALTHIER • PEOPLE™



Healthy Homes – Highlights



- Top 3 Program – lead poisoning prevention, indoor air quality and smoke/CO alarm devices
- Healthy Homes Surveillance System
- Healthy Homes Workforce Development

SAFER • HEALTHIER • PEOPLE™



Healthy Communities – Objectives



- **Objective 1:** air, water, food, and waste disposal and safe from toxic, infectious, and other hazards
- **Objective 2:** prevent, detect, and control infectious diseases
- **Objective 3:** design and development of built environments
- **Objective 4:** equitable access to and receipt of essential health services
- **Objective 5:** climate change
- **Objective 6:** Prevent injuries and violence
- **Objective 7:** Improve social determinants of health

SAFER • HEALTHIER • PEOPLE™



"Healthy Communities" *Public Health Grand Rounds*



Highlights:

- West Wabasso is a small, low-income, minority community in Indian River County in central Florida.
- Community identified their top "health" issues: lack of safe/healthy housing, lack of community safety from violence (drug trafficking), street lighting, accessible areas for safe physical activity and recreation, access to safe drinking water, and septic failures/lack of access to a municipal wastewater system.
- With initial \$30,000 public health grant, West Wabasso's community collaboration leveraged an estimated at \$1.5 million to date for:
 - ◆ Installation of initial streetlights and sidewalks
 - ◆ Installation of walking trail/fitness equipment in Wabasso Park
 - ◆ Creation of community fit club, "PACE setters", who utilize the new sidewalks, walking trail, and park.
 - ◆ Municipal potable water installed throughout the community
 - ◆ New bus route created and now the most frequently traveled of all routes in the county.



Chamblee Environmental Health Lab



Before



SAFER • HEALTHIER • PEOPLE™



Chamblee Environmental Health Lab



After

SAFER • HEALTHIER • PEOPLE™



Building 110 has allowed unprecedented focus of scientists on major public health challenges by providing an environment that has an intelligent and flexible space design; specialized, uninterrupted and reliable power; simplified connection of scores of advanced instruments to specialty gases and pumping systems; reliable and stable temperature and humidity control; straightforward and workable division of space by security need; unusually expansive and critical storage space outside the working laboratory; ample conference rooms positioned near lab space; daylight penetration to literally every laboratory room; and visually pleasant internal and external features.

SAFER • HEALTHIER • PEOPLE™



Questions?

SAFER • HEALTHIER • PEOPLE™